

## Midget Blocks—Block 170

Midget Blocks are a series of wonderful little blocks adapted from an antique sampler quilt made during the 1930s. I hope you'll enjoy making these blocks and a sampler quilt of your own.

Most of the blocks were made using just two colors. A print or solid color and the background fabric. This block in the original quilt was constructed using a green, pink and yellow solid and cream background fabric.

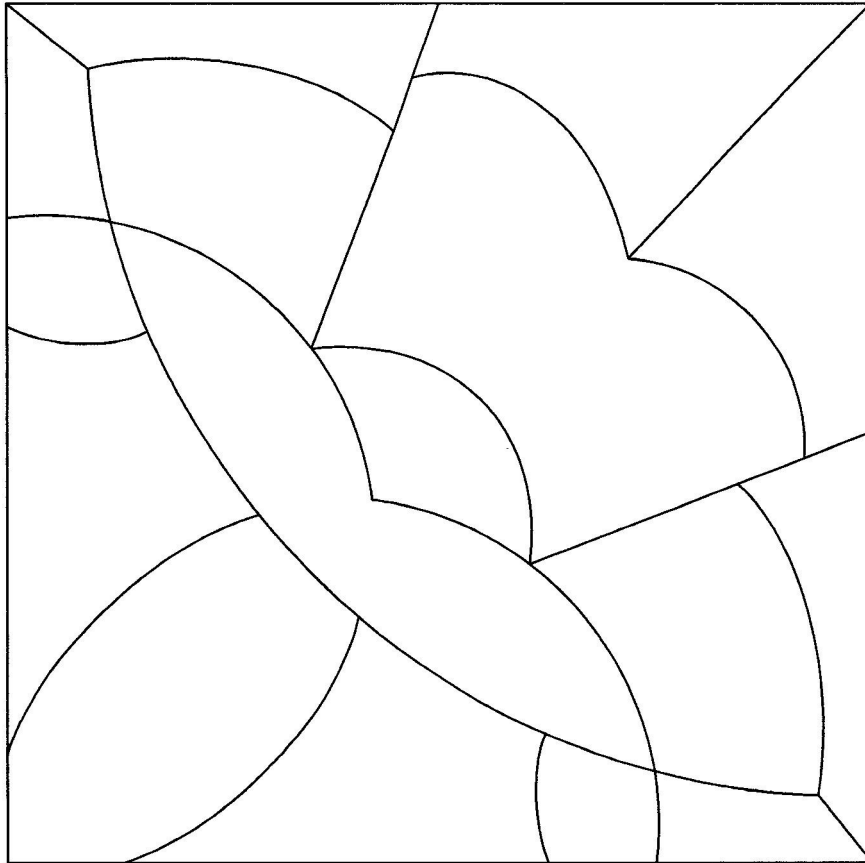
**Unknown - 4 1/2"**

In the antique quilt this block is the seventh block from the left in the sixth row.

*You can hand piece this block.*

*You can print this page on freezer paper and cut out the shapes to use as templates.*

The 1/4" seam allowance is NOT included on templates. Add your seam allowance when cutting your fabric for hand or machine piecing.



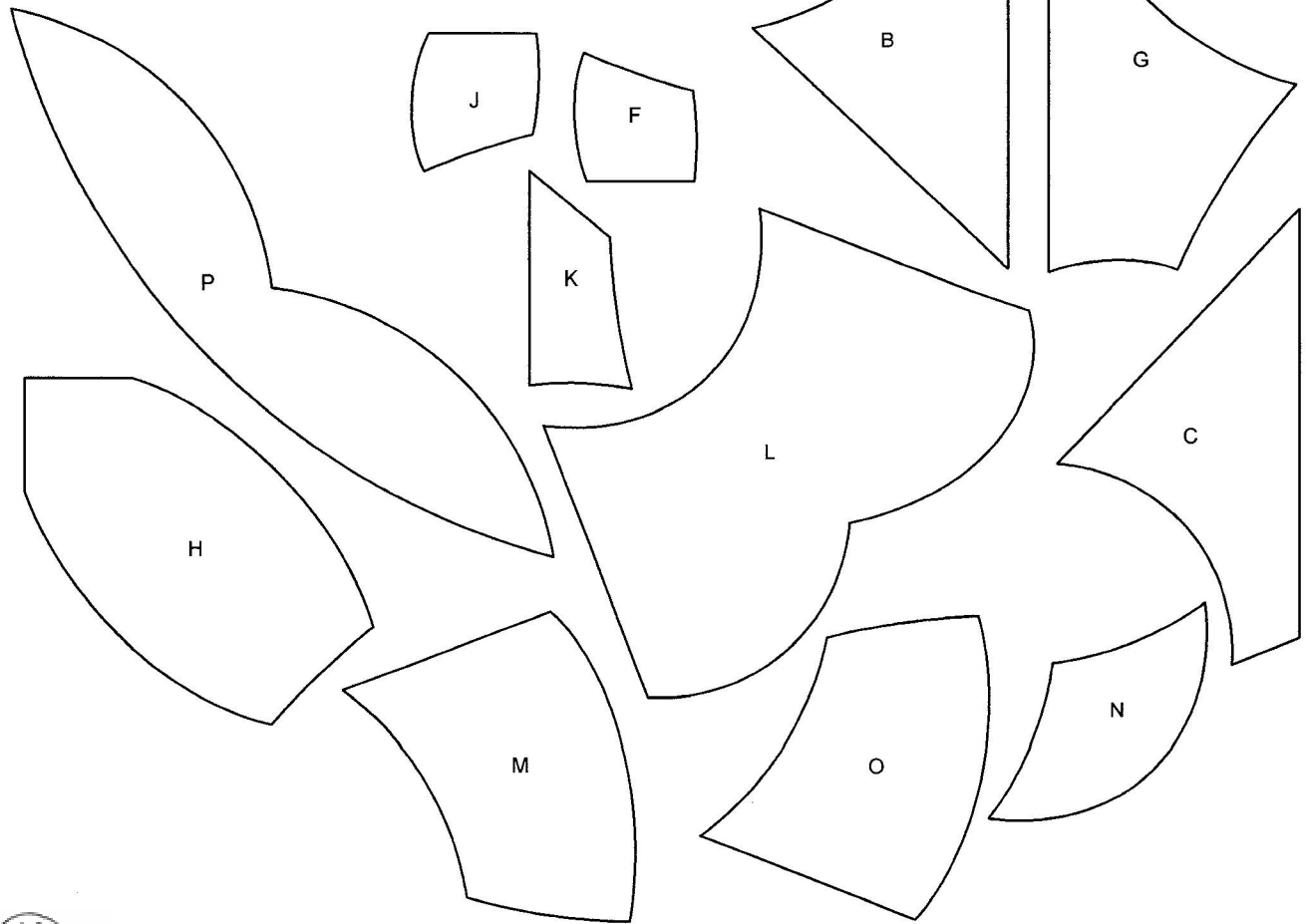
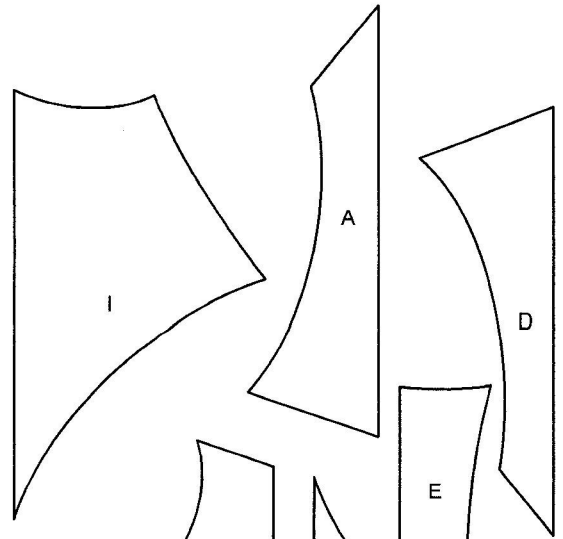
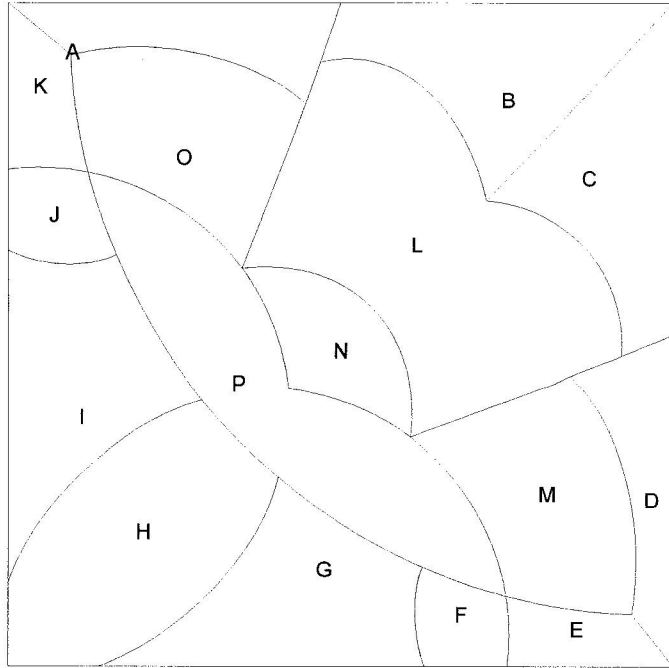
***Sentimental Stitches™***

4759 Boyd NE / Grand Rapids MI 49525  
Phone:(616)361-9255 / email: [ssquilt@aol.com](mailto:ssquilt@aol.com)  
[www.sentimentalstitches.com](http://www.sentimentalstitches.com)

Copyright 2014

This line should  
measure 1" after  
printing pattern.

# Midget Blocks—Block 170



**Sentimental Stitches™**

4759 Boyd NE / Grand Rapids MI 49525  
Phone:(616)361-9255 / email: [ssquilt@aol.com](mailto:ssquilt@aol.com)  
[www.sentimentalstitches.com](http://www.sentimentalstitches.com)

Copyright 2014

This line should  
measure 1" after  
printing pattern.