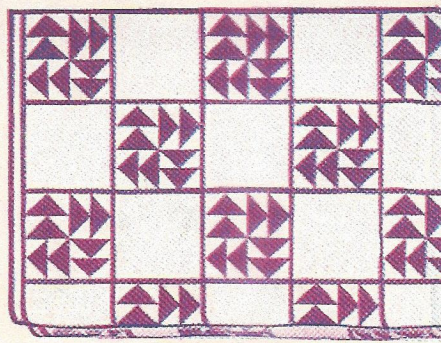


# Replicas of FAMOUS QUILTS AND MODERN QUILTING DESIGNS

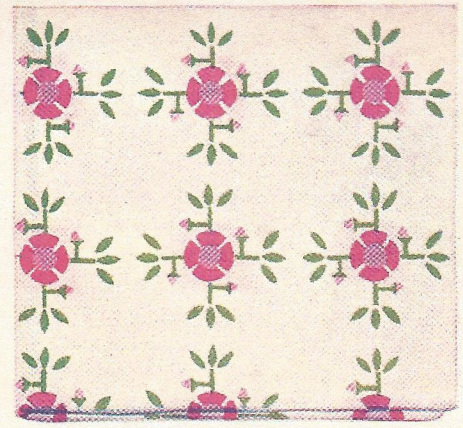
These designs may be used in other colors which may be more adaptable to your decorative plan.



WREATH OF ROSES



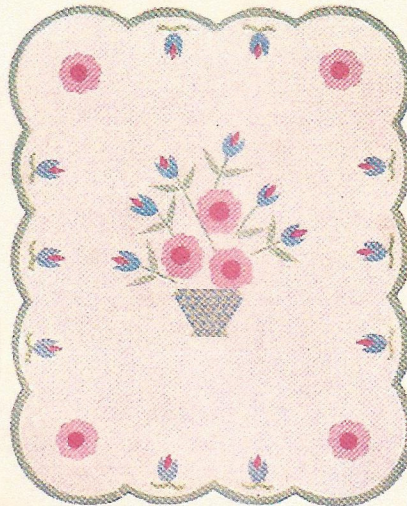
DUTCHMAN'S PUZZLE



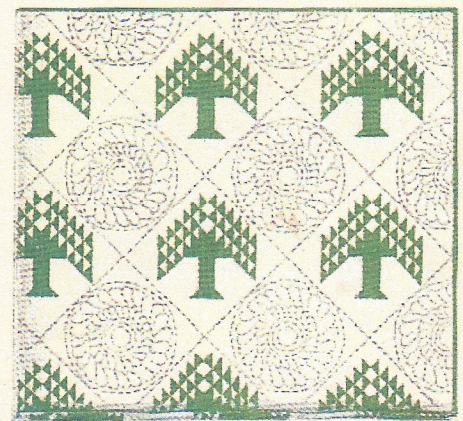
WILD ROSE



MRS. CLEVELAND'S CHOICE



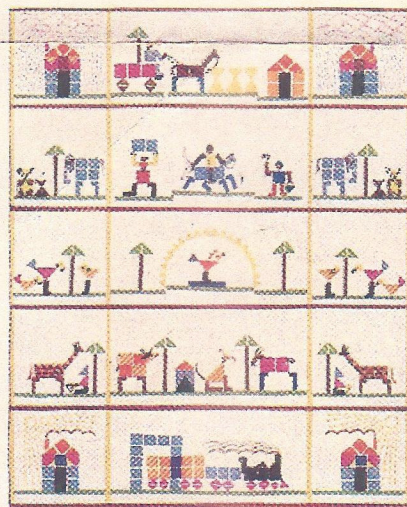
FLOWER GARDEN



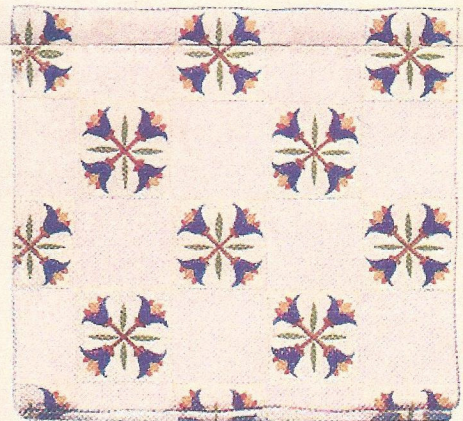
PINE TREE



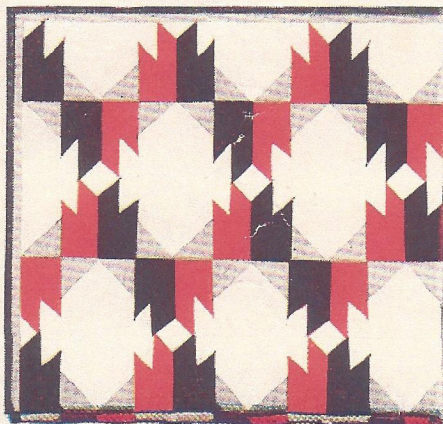
SPRINGTIME



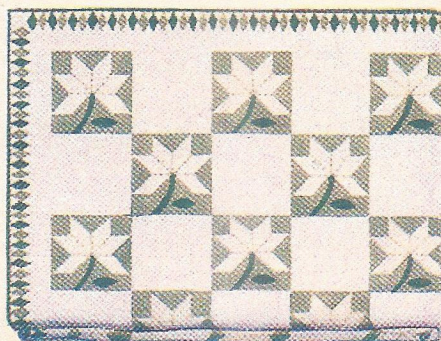
SLUMBERLAND



HOLLAND TULIP



THE CHIEF



WHITE LILY



STAR AND CRESCENT

**GROUP 1**  
Wreath of Roses  
Mrs. Cleveland's Choice  
Springtime  
The Chief

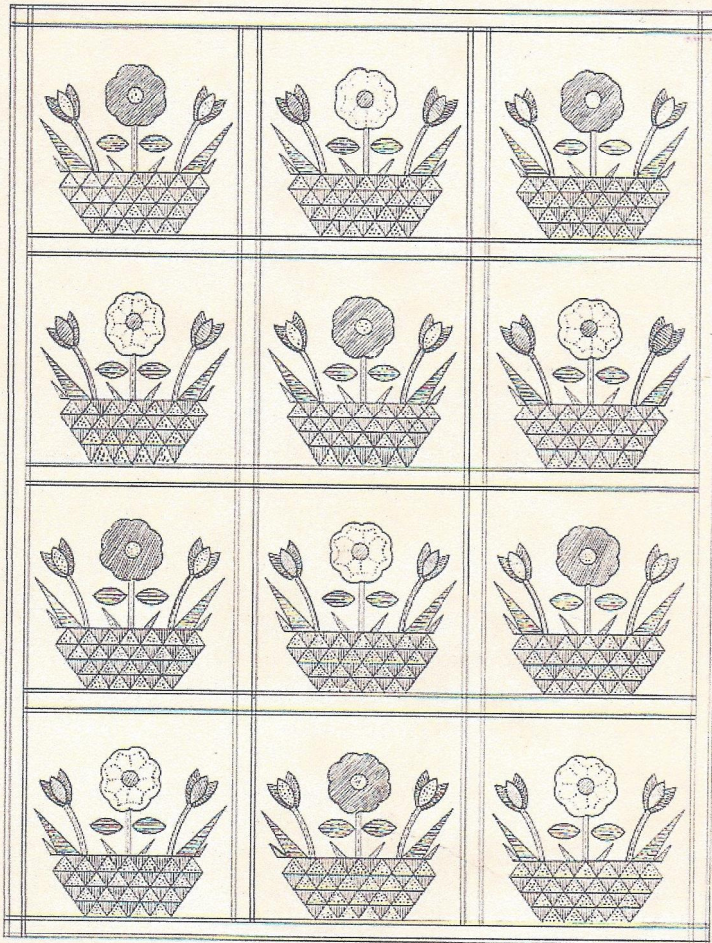
**GROUP 2**  
Dutchman's Puzzle  
Flower Garden  
Slumberland  
White Lily

**GROUP 3**  
Wild Rose  
Pine Tree  
Holland Tulip  
Star and Crescent



## Tuesday Treasure

# Replicas of FAMOUS QUILTS AND MODERN QUILTING DESIGNS



## SPRINGTIME

THE old flower basket was so important to the early quilters that any selection of modern patterns would be incomplete without it.

"Springtime" features the cut flowers of early Spring, each bouquet peeping from its window of your quilt to lend a beauty and freshness to your bedroom which is symbolical of Spring itself.

In this pattern, the basket is made by piecing together the small triangles as in the illustration.

Upon finishing the basket, appliqué the center of the basket to the center of a 20 x 20 inch white square. Next appliqué the stem of the central flower at the center of the bowl and complete, appliquéing the circle after setting the petals.

Next appliqué the leaves, tulip stems and tulips as in the illustration. Six squares have the central flower of red with apricot center and tulip with the apricot center, while in the other six, the central flower is apricot with red center, the tulips also having a red center.

Alternate the squares and join by 3-inch white border. Appliqué the green lattice all around and finish off.

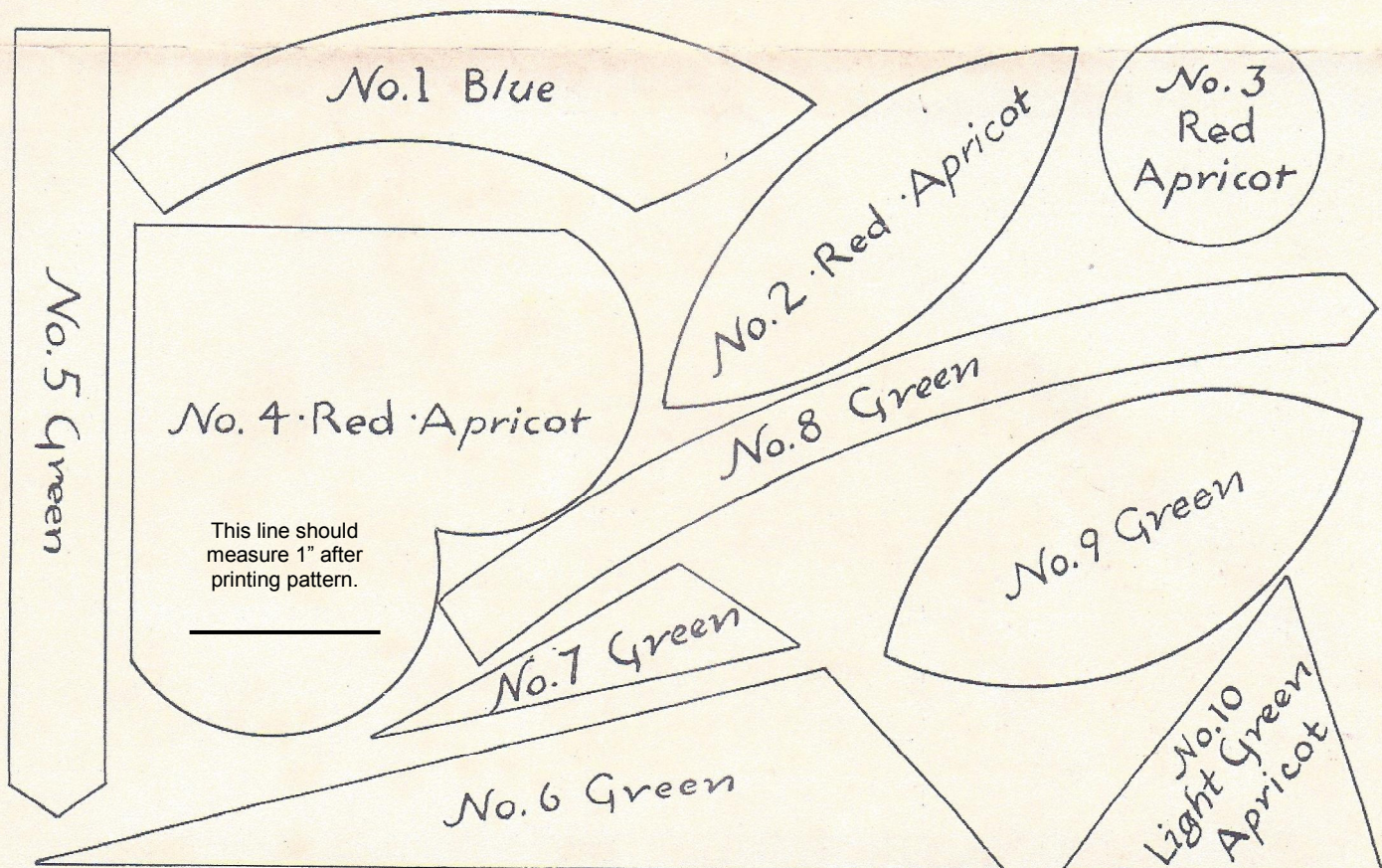
When making your patterns, allow  $\frac{1}{4}$ " at all edges for the seams and turning. To simplify, it is easier to make a tracing of the elements, paste them on cardboard and cut out  $\frac{1}{4}$ " from the edge.

The finished quilt will be 68 x 90 inches.

### MATERIAL CHART

Part	Color	Pieces	Yardage
No. 1—Petal	Blue	48	$\frac{3}{8}$ yard
No. 2—Petal	Red	12	
No. 3—Rose Center	Red	6	$\frac{3}{8}$ yard
No. 4— $\frac{1}{4}$ of Rose	Red	24	
No. 2—Petal	Apricot	12	1 $\frac{1}{8}$ yards
No. 3—Rose Center	Apricot	6	
No. 4— $\frac{1}{4}$ of Rose	Apricot	24	
No. 10—Triangle	Apricot	264	
No. 5—Stem	Green	12	2 yards
No. 6—Leaf	Green	24	
No. 7—Leaf	Green	48	
No. 8—Stem	Green	24	
No. 9—Leaf	Green	24	1 yard
$\frac{1}{4}$ -inch Strips	Green	Four 95-inch	
		Four 89-inch	
		Four 72-inch	
		Six 66-inch	
No. 10—Triangle	Lt. Green	288	2 yards
3-inch Strip	White	Four 89-inch	
		Three 66-inch	
		Two 72-inch	

These figures are based on material 36 inches wide



One of the squares of this design will make a delightful pillow top

If you desire additional patterns, there is an excellent selection of both old and modern designs shown on the reverse side

LOCKPORT COTTON BATTING COMPANY  
Lockport, N. Y.

Please send me the patterns in

Group 1 ☐  
Group 2 ☐  
Group 3 ☐