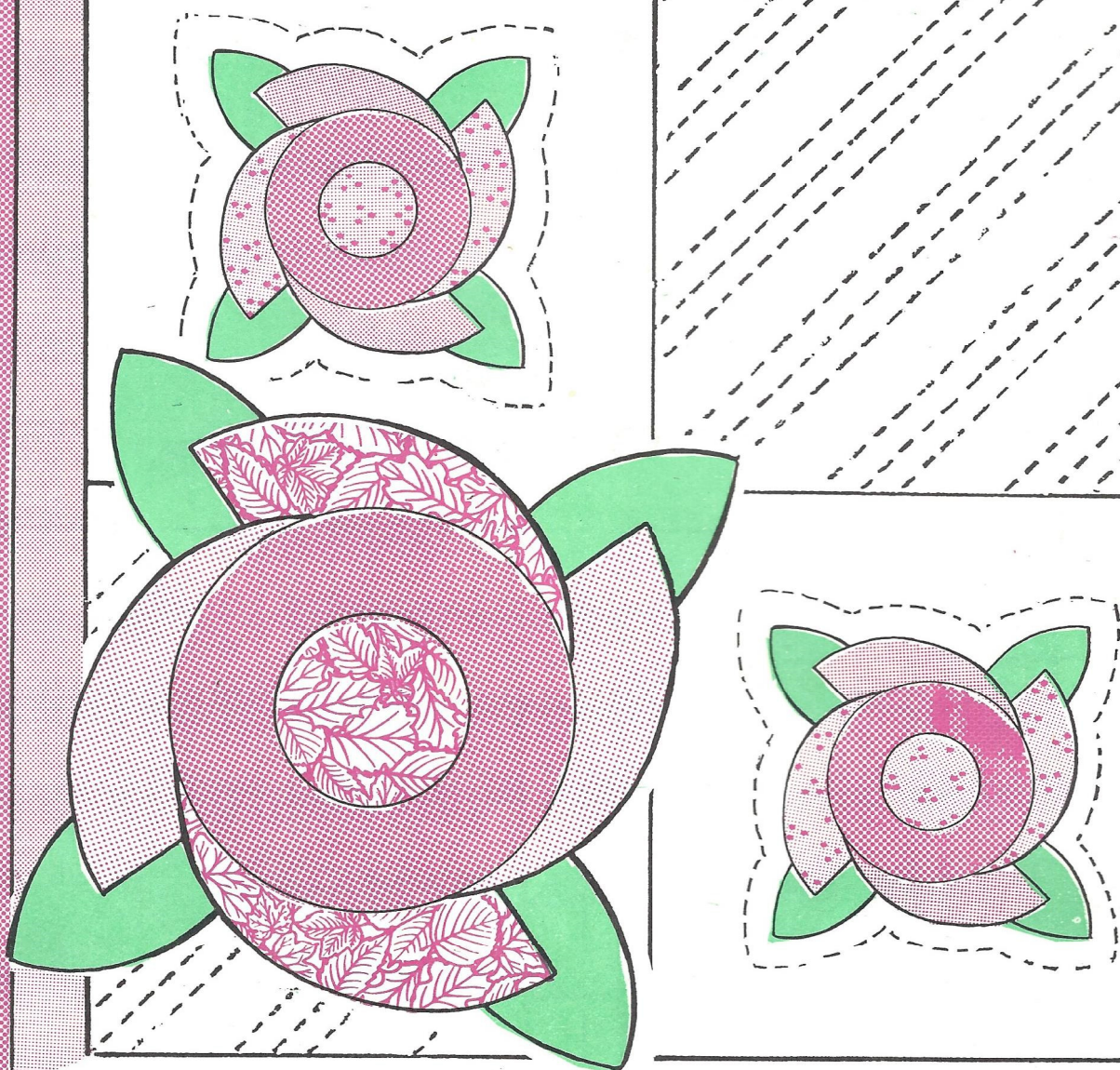


Washington Merry-Go-Round



A modern interpretation of the capital city of the United States where our presidents hold forth — a merry-go-round — is depicted by this whirligig design.

The motif can be made in the good old red, white and blue for a patriotic look and it is quite lovely in shades of rose solids and prints with green leaves.

The motifs are applied on a 12-inch (plus seam allowance) square. Alternate applique blocks with plain blocks. For a twin bed size, plan a quilt 5 blocks wide and 7 blocks long (18 appliqued, 17 plain); add 3 strips 2 inches wide for a frame for the joined blocks. Quilt will measure approximately 72 by 96 inches.



Sentimental Stitches™

4759 Boyd Ave NE / Grand Rapids MI 49525 / Phone: 616-361-9255
www.sentimentalstitches.com / email: info@sentimentalstitches.net

This line should
measure 1" after
printing pattern.

TUESDAY TREASURE

The plain blocks can be quilted with one of the motifs included in this book for plain squares. Quilt around the applied motifs on the other squares and quilt diagonal lines $\frac{3}{4}$ inch apart on the rest of the quilt.

Requirements:

White — 35 $12\frac{1}{2}$ -inch squares — $4\frac{1}{4}$ yards of 45-inch.

Pink print — 18 of A

36 of C — $\frac{1}{2}$ yard of 45-inch.

Pink solid — 36 of C

2 end borders $60\frac{1}{2}$ by $2\frac{1}{2}$ inches.

2 side borders $88\frac{1}{2}$ by $2\frac{1}{2}$ inches —
1 yard of 45-inch.

Rose solid — 18 of B

2 end borders $64\frac{1}{2}$ by $2\frac{1}{2}$ inches.

2 side borders $92\frac{1}{2}$ by $2\frac{1}{2}$ inches —
1 yard of 45-inch.

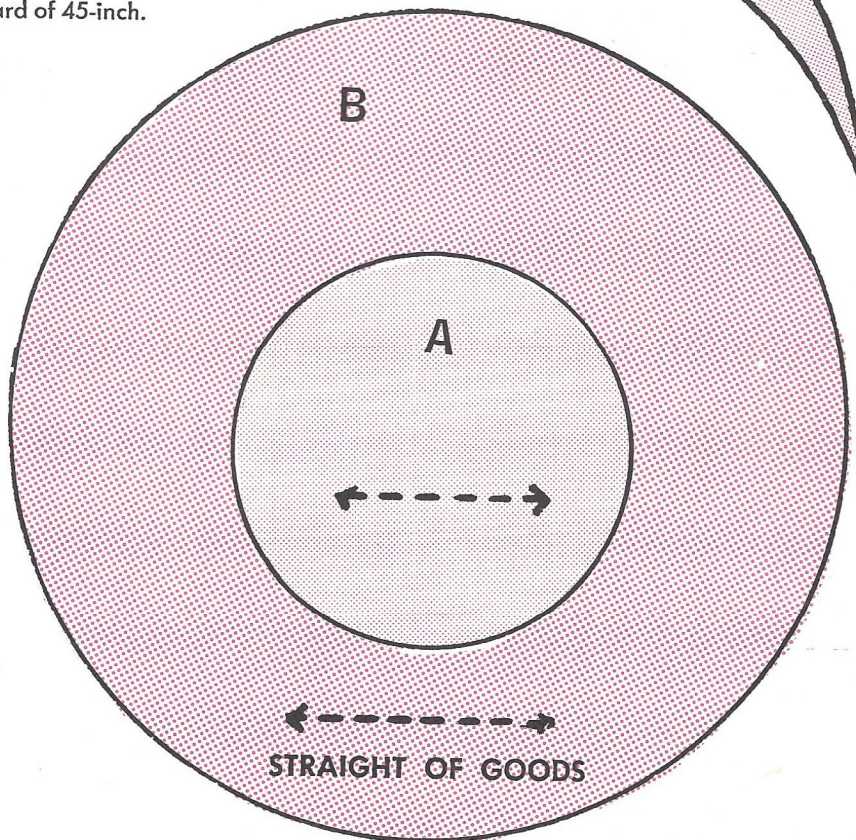
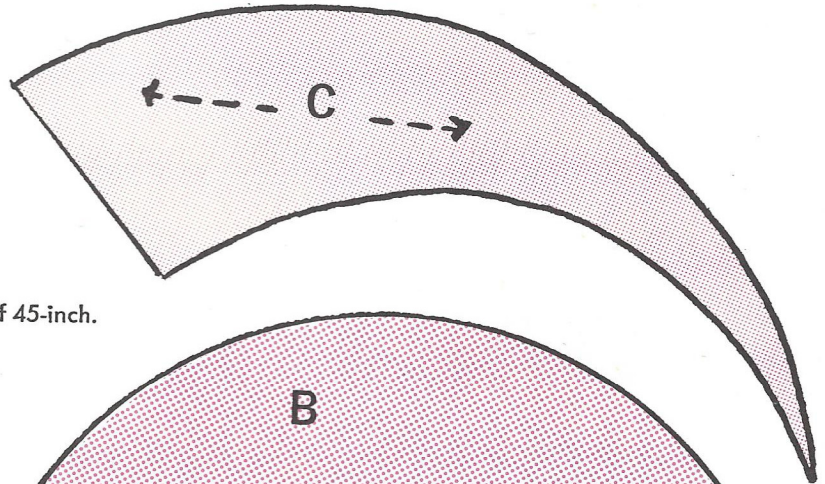
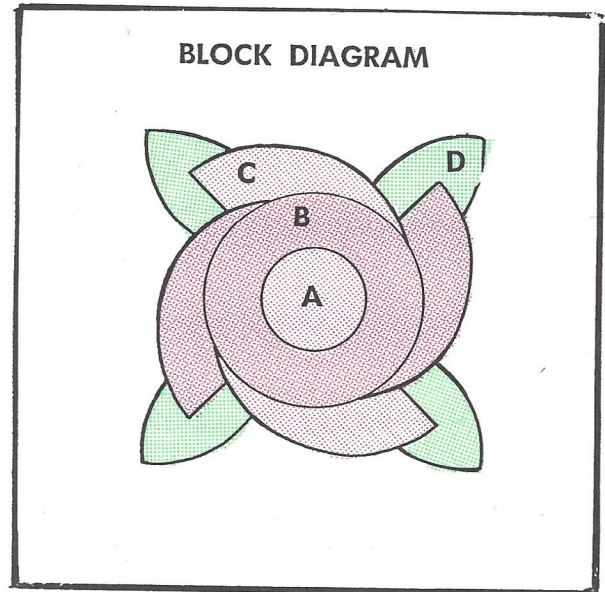
Green — 72 of D

2 end strips $68\frac{1}{2}$ by $2\frac{1}{2}$ inches.

2 side strips $96\frac{1}{2}$ by $2\frac{1}{2}$ inches — 1 yard of 45-inch.

Binding — 9 yards of bias tape or $1\frac{1}{2}$ -inch bias.

Backing — $5\frac{1}{2}$ yards of 45-inch.



PATTERN PIECES

(Actual Size — No Seams Allowed)

